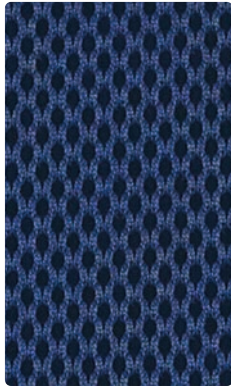


301-034 Caribbean



301-006 Black



301-024 Sapphire



301-019 Marigold



301-013 Limelight



301-026 Sterling



Application
Seating Fabric/Acoustic

Content
100% Polyester

Width
54 inches

Abrasion (Wyzenbeek)
Exceeds 1,002,000 Double Rubs

Finish
None

Reduced Environmental Impact
GREENGUARD Gold Certified



301-014 Sky



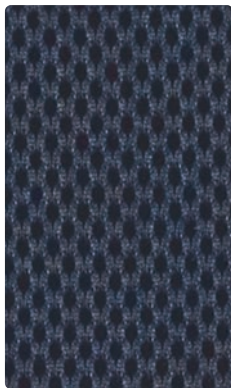
301-009 Cayenne



301-003 Hunter



301-000 Mocha



301-004 Ink



301-011 Paprika



301-001 Wine



301-016 Pewter





TECHNICAL INFORMATION

Content: 100% Polyester Width: 54" Weight: 16 oz./linear yard	Backing: None Finish: None Cleaning Code: WS	Approx. Repeat: Non-Matching Directional: Yes Railroaded: No
---	--	--

PERFORMANCE (*Certifications Marks owned by ACT®)

Test Method	Results
Surface Abrasion: Heavy Duty *	ASTM D-4157 (Cotton Duck) Exceeds 1,002,000 Double Rubs
Breaking Strength: *	ASTM-D-3597/5034 (Grab Test) Warp 129 lbs / Fill 78 lbs
Pilling Resistance: *	ASTM D-3512-2010e1 Class 4.5
Colorfastness to Crocking: *	AATCC-8 Dry: Class 4 min / Wet: Class 4 min
Colorfastness to Light: *	AATCC-16-04 Class 4 at 40 hours

Class in the colorfastness requirements is based on a numerical scale of 5 for negligible or no color transfer to 1 for very severe color change or color transfer.

FLAMMABILITY *

California Technical Bulletin 117-2013 NFPA 260/UFAC Class 1	Passes Passes	ASTM E84 (Unadhered) Class 1 or A FMVSS 302	Passes Passes
---	------------------	--	------------------

May comply with California Technical Bulletin 133 when combined with appropriate components.

REDUCED ENVIRONMENTAL IMPACT

This product is GREENGUARD Gold Certified for low chemical and particle emissions to UL standard UL 2818 and may contribute to LEED certification. For complete information visit mayerfabrics.com and UL.com/gg.

CLEANING INFORMATION

WS: Water/Solvent Cleaner – Spot clean, with a mild solvent, an upholstery shampoo, or the foam from a mild detergent. When using a solvent or dry cleaning product, follow instructions carefully and clean only in a well-ventilated room. Avoid any product that contains carbon tetrachloride or other toxic materials. With either method, pretest a small area before proceeding. Always rinse promptly with clean water.

ADDITIONAL INFORMATION

Abrasion: Multiple factors affect fabric durability and appearance retention, including end-user application and proper maintenance. Wyzenbeek results above 100,000 double rubs have not been shown to be a reliable indicator of increased fabric lifespan.

Custom Capabilities: All patterns can be custom colored. Minimum yardage applies.

Memo Samples: Please keep this card intact. Individual memo samples can be ordered on the Mayer Fabrics website or by contacting Mayer Fabrics customer service.

Fabric Matching: Mayer Fabrics always attempts to ship a satisfactory commercial match. Because of industry standard dye lot variation, colors may not match exactly.

Specifications: Specifications are correct at the time of printing. Current specifications are available on the Mayer Fabrics website.

For information or assistance with products or services, call Mayer Fabrics at 800.428.4415 or refer to the Mayer Fabrics website.



DAUPHIN

VALO®

USA: 100 Fulton Street • Boonton, NJ 07005
TEL: 800.631.1186 FAX: 800.220.3844
EMAIL: info@dauphin.com
WEB: www.dauphin.com

MAYERFABRICS

USA: 500 South Kitley Avenue • Indianapolis, IN 46219
TEL: 800.428.4415 FAX: 317.267.2629
EMAIL: customerservice@mayerfabrics.com
WEB: www.mayerfabrics.com